

COMING HOME



PINE MANOR College Bulletin

THE MAGAZINE FOR ALUMS & FRIENDS OF THE COLLEGE
FALL 2019



ARE YOU A PINE MANOR COLLEGE G.O.L.D. ALUM?

Have you **Graduated Over the Last Decade**? If the answer is yes, then you are a PMC G.O.L.D. Alum! Even after you've left campus, being part of the G.O.L.D. Alumni community offers you the opportunity to stay linked to Pine Manor College and to other recent graduates. Through networking and career development opportunities, social events, and volunteer experiences geared specifically for recent graduates, we hope to keep you connected.



GOLD FOR GOLD

"Pine Manor College changed my perspective and motivated me to further my education. I am incredibly grateful for the support and dedication that I received. Thanks to my PMC experience, I know that I can achieve every single goal that I set for myself.

I believe that the least that I can do is to give back to Pine Manor College so that the next generation will have the same opportunities."

- Karoline D'Brito '19

If you would like to be more involved by taking on a leadership role in event planning or have specific programming ideas please contact Kathleen Fowkes, at 617-731-7113, or by email at kfowkes@pmc.edu.

Stay tuned for more G.O.L.D. events and updates!

To read more, visit: www.pmc.edu/gold

FROM PRESIDENT O'REILLY



Dear Alums, Friends and Neighbors,

Welcome Home! These are the words that greeted our students (including 110 first-year students!) as they arrived on campus this fall. Home is where the heart is, where one is nurtured and cared for and where one contributes to the well-being of all. Home is not actually a place. It is a set of experiences, memories, feelings, and people that make us feel good and valued. It reflects a time in our lives when we are strengthened and when we strengthen others by showing love, care, and commitment. Because of all of this, we grow. That's why so many of our students, alums, and friends call Pine Manor College home. Our mission, indeed our whole being, is about creating home.

In these pages you will see how true this is. We highlight seven remarkable alums who "came home" to Pine Manor College as Faculty, Staff, and Members of the Board of Trustees. They returned with their gifts and well-honed talents to give back to those who helped pave the way for them and so that they could contribute to the next generation. You will read the messages of gratitude by alums for what Pine Manor College has and continues to offer to all members of our community. It is present in the words of our Commencement speakers, our first-generation students, our graduates, and one Alum whose appreciation spanned over 50 consecutive years of donations to PMC.

As you read through this edition of our Bulletin, we hope you feel the pull of home and save the date for our Coming Home weekend in November 2020! It will be a special all-College reunion to which all are invited. We will use it as an occasion to celebrate you and all who make Pine Manor College a community. We hope by then to showcase many changes on campus, among them: gifted renovations to the Rosemary Ashby Student Center Atrium; gifted new and improved accessibility renovations to the Ferry and other key buildings; the Pine Manor College Community Garden, which was launched in May and is now being harvested for use in the College's dining hall and for lab studies by the Biology Department; and a revitalized Hess Art Gallery and Ellsworth Theatre for which the College recently received a matching grant opportunity of \$70,000 to cover half the cost of renovating this incredible space (see page 16 for more details and how you can help).

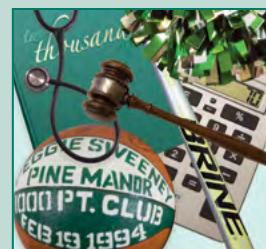
Home is indeed where the heart is. Home is Pine Manor College!

Very truly yours,

A handwritten signature in black ink that reads "Thomas M. O'Reilly". The signature is fluid and cursive, with the first name "Thomas" and last name "O'Reilly" clearly legible.

Thomas M. O'Reilly, President

BULLETIN HIGHLIGHTS



Coming Home
Page 5



Honorary Degree Recipients
Page 10



Homegrown
Page 18



50 Years of Giving
Page 25

Office of the President
617-731-7101
president@pmc.edu

Advancement
617-731-7113
development@pmc.edu

Admissions
617-731-7011
admission@pmc.edu

Media & Publications
617-731-7163
publications@pmc.edu

Efrat Zinnar-Shavit
Director of Media & Publications
ezinnarshavit@pmc.edu

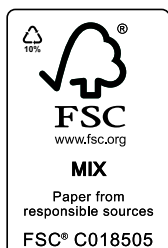
Tamar Petler
Graphic Designer & Staff Photographer
tpetler@pmc.edu

Contributing Writers &
Proofreaders:
Hannah Baker-Siroty
Liz Cary Blum '92
Erin Deegan
Joe Fagnoli
Sharyn Rogers
Staci Weber
Sarah Woolf

Interns:
George Anderson
Danny Nguyen



Cover story: Coming Home
Page 5



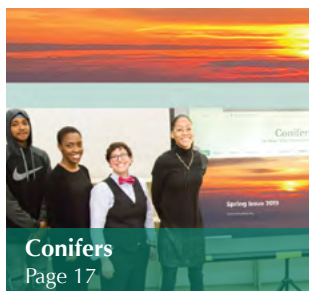
Printed on recycled paper.



First-Forward
Page 11



At Home
Page 14



Conifers
Page 17



Recognition
Page 19

TABLE OF CONTENT

| | |
|---|----|
| LETTER FROM THE PRESIDENT | 3 |
| COMING HOME | 5 |
| COMMENCEMENT 2019 | 9 |
| HONORARY DEGREE RECIPIENTS | 10 |
| FIRST FORWARD DESIGNATION | 11 |
| NURTURING ENTREPRENEURSHIP | 13 |
| AT HOME | 14 |
| MCC GRANT AWARD | 16 |
| CONIFERS. PMC ONLINE LITERARY PUBLICATION | 17 |
| HOMEGROWN | 18 |
| PMC HIGH ACHIEVERS | 19 |
| COMMUNITY HIGHLIGHTS | 20 |
| RETURNING HOME | 21 |
| ROBERT CALHOUN, REMEMBERED | 22 |
| WRITING HOME. NOTES FROM PMC ALUMS | 23 |
| 50 YEARS OF GIVING | 25 |
| TIME TO COME HOME | 26 |

An electronic copy of this
Fall 2019 Bulletin with
links to additional photographs
and related information
is available on our web site:

www.pmc.edu/bulletin

Published by Pine Manor College, 400 Heath Street, Chestnut Hill, MA 02467, USA.
Publication of material does not indicate endorsement of the author's viewpoint by the
magazine, the Alumni Association, or Pine Manor College.

Pine Manor College is an Equal Opportunity Employer committed to being the place
where a diverse mix of talented people want to come, to stay, and do their best work. As
a welcoming community, the College embraces Title IX of the Education Amendments of
1972, and other relevant legislation, and does not discriminate on the basis of race, color,
national or ethnic origin, sexual orientation, age, sex, or marital status.

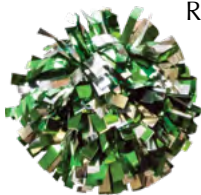


The mission of Pine Manor College is to make certain that all graduates are prepared to take meaningful steps in their lives: engaging in jobs and careers, continuing to learn, and positively contributing to their communities.

Introducing seven accomplished alums who experienced first-hand our transformative mission and chose to continue to play a major role in our future. Here are their stories:

Lise Chin Leist '73

Coming home as a Pine Manor College Trustee (2015 - Present)



Raised by her mom and great grandmother, Lise recalls that conversations of college were not on the table. A first-generation student from Rye, New York, college was on her radar, but there were no financial resources or school mentorship programs that provided a concrete path to get there. Two weeks before high school graduation, Lise mentioned to her mother that everyone was going to college and that perhaps she should join the Navy. The very next day, her mother called the high school counselor who reached out to 'someone who knew someone' and introduced Lise to Pine Manor College. The next thing she knew, she was on a train from New York to Boston on her own, finding her way to her new home.

Lise was soon introduced to new people and new ideas. And through the many meaningful relationships that she built at Pine Manor College, this unfamiliar territory became a second home, and offered an opportunity for growth, as Lise described, *"Everyone at Pine Manor College, from faculty to administration, all made me feel worthy. I never felt isolated. I felt so welcomed and embraced. It's that sense of belonging that launched my career and empowered me to dream big and aim high."*

After graduation, Lise attended Manhattanville College, and ultimately, her skills in marketing drew Lise into publishing. She landed a position with Gannett at USA Today, advancing to Vice President of Classified Advertising. Since then, Lise has been passionate about education and social justice and has kept a strong connection to PMC. Today, Lise is Director of Students for Future 5 in Stamford, CT, a 10 year old non-profit that helps motivated low-income high school students. She is also Vice Chair of the Board of Trustees of Pine Manor College, helping to make the case for her alma mater and to set the course for the future.



“EVERYONE AT PINE MANOR COLLEGE GAVE ME A CHANCE. AND NOW IS MY CHANCE TO GIVE BACK.”

Chitra Sharma '98

Coming home as Pine Manor College's Chief Financial Officer

At Pine Manor College, students don't just get an education, they get the promise of a bright future. This was no different for Chitra Sharma '98. After graduating from Pine Manor College and working for several non-profits and public accounting firms, Chitra attended Bentley University and earned her MBA in Business Analytics.

"There is no doubt that Pine Manor College and its professors gave me the self-confidence to keep pushing ahead, to find out who I was and encourage my efforts in a positive, supportive environment. It taught us how to work both independently and as part of a team of people with different strengths, perspectives, and shared goals."

Motivated and competitive by nature, Chitra had already assumed leadership roles within other organizations. But rejoining the PMC community, this time as CFO, was different. This was her opportunity not only to take on a role that would integrate her strengths and experience in Finance, IT and Human Resources – but to do so for an organization she knows and believe in, her own alma mater! Chitra is a key member of the PMC Senior Leadership Team.



"Getting up every day and doing my best. Being competitive and feeling passionate about moving forward." This is how Chitra describes her personal work-style, *"In this unique setting in which one can feel comfortable and enjoy a sense of belonging, it is here that one can find and be oneself. That's what people mean when they describe 'feeling at home.'"*



"I FEEL PROUD THAT I AM NOW ABLE TO PAY IT FORWARD."

Margaret (Peggie) Sweeney Krippendorf '96

Coming home as a Pine Manor College Trustee (2016 - Present)

After graduating from PMC in 1996 with a Bachelor's degree in Business Management and earning campus-wide fame as the all-time leading basketball points scorer, Peggie Krippendorf went on to earn her law degree. A strong believer in the value of real-world experience, Peggie took advantage of a series of internships while at Pine Manor College that helped her to fine-tune her career interests. Her first internship at a prestigious Boston investment firm proved less than satisfying for Peggie. However, as Peggie describes it, the upside was that - *"sometimes, failed internships can be the most valuable in re-directing a career path closer to your personal goals."*

Next came an internship with the Alcoholic Beverage Control Commission for the Commonwealth of Massachusetts - putting her on the front lines of investigations, law enforcement and civil judicial proceedings. This experience sent Peggie applying to law school. She attended law school at night for four years while working days at the State House as a Legislative Aide in the Massachusetts State Senate. Upon graduation, she worked as a Law Clerk in the Superior Court researching and writing for Superior Court Justices. Today Peggie is the First Assistant District Attorney in the Norfolk County District Attorney's Office, who manages to make time to enjoy her 4th year as an active member of Pine Manor College's Board of Trustees. She attributes her success to Pine Manor College's engaging professors and staff, its family-oriented community, the small-scale environment, and the incredible internship opportunities. Peggie does not hesitate to say that Pine Manor College 'lit a fire under her.'



"I WANT TO MAKE A DIFFERENCE IN THE LIVES OF OUR YOUNG ADULTS."

"The students at Pine Manor College have so much potential. They often get a little bit more encouragement from the faculty, staff and community, and that is all they need to make them shine. With just a little PMC-TLC, we can all go on to do incredible things."

Dorothy (Dorry) Davis Kee '72, P'18

Coming home as a Pine Manor College Trustee (2015 - Present)

After three degrees and three careers, Dorry Kee laughingly says, *"I'm a 'triple threat' – a trustee, an alum, and a PMC parent."* Summing up her experience at Pine Manor College, the word 'opportunity' quickly comes to mind.

Growing up in Dallas, Texas, Dorry embraced the new environment at Pine Manor College. She enjoyed challenging new opportunities, from interesting internships to invaluable connections within New England and beyond, the possibilities seemed endless. Dorry went on to pursue a pre-med path at Duke University followed by a Master's in Healthcare Administration at Texas Woman's University.

It is no surprise that experiencing the College as a parent, was most exciting for Dorry. After graduating with a Bachelor degree in communications her son, Nate Kee '18, realized he really wanted to into the sciences in pursuit of a career in healthcare. He was welcomed to PMC and worked to meet the requirements for a Bachelor's degree in biology. His senior year internship in the Trauma Services unit at *Inova Loudoun Hospital* in Virginia, turned into full-time employment! *"It was wonderful being back on campus,"* Dorry reflects, *"meeting his great teachers and at graduation presenting him his diploma! Several of his teachers became steady mentors for him just as mine had when I was a student. He even had a class with my favorite professor, Dr. Beth Gardner! I believe this mentorship is one of the school's strong values. It was thrilling to know that this many decades later it still is an integral part of the student experience at my alma mater!"*

More than an academic at heart, Dorry worked to positively impact the success of those around her. *"It is my personal conviction that every individual can thrive with mentorship, personal engagement, and the opportunity to continue to grow and advance."* Today, as an active member of PMC's Board of Trustees, Dorry continues to push the organization forward while keeping its long-time tradition of empowerment and care.



“WE'RE A SMALL BUT MIGHTY GROUP AND WE ALL TRY TO CONTRIBUTE WHERE IT MATTERS MOST.”

Elizabeth (Liz) Adjei '13

Coming home as a Pine Manor College Trustee (2013-2019)

Liz Adjei is a recent graduate of PMC, Northeastern University, and a Trustee at Pine Manor College. She came to the United States from Ghana, attended high school for a year, then thanks to a last-minute suggestion from her mentor, found Pine Manor College. She had only two weeks to get ready for the start of the semester, nevertheless, she recalls, *"I felt like it was a home to me."* Liz was all about confidence. She was used to pushing herself. She felt that high school in the States was a 'total joke' compared to school in Ghana, but when she got to Pine Manor College, she was thrilled to find demanding academic rigor that pushes students to stretch beyond their comfort zone. And with that she also found a real community, *"People were always willing to help me – in and out of the classroom."*

Liz majored in Biology, paving the way to pursue a career in Healthcare. But which way to go? Physician Assistant, Nurse Practitioner, Medical Technologist? Or a different path in the Sciences? She turned to the people she trusted for guidance – her mentors at Pine Manor College. With that support and advice, she applied, enrolled and graduated from Northeastern University with a degree in Nursing.

Simultaneously, Pine Manor College was calling her back. With new ideas and a great sense of commitment to the mission, who better to join the Board of Trustees?

"I was ready, and felt compelled to communicate the perspective of our students, and to work on promoting their needs, from enhancing WiFi connectivity on campus, to advocating for advanced health and wellness programs."



“I'M PROUD TO BE A VOICE FOR THE STUDENTS.”



Liz Cary Blum '92

Coming home as Pine Manor College's Director of Alumni Relations

As Director of Alumni Relations, and a 1992 graduate of Pine Manor College, Liz Cary Blum has invested much time, energy and talent supporting PMC. *"I'm grateful that I was wise enough at age 17 to make the decision to attend college here. It quickly became my second home."*

After graduation, Liz served on the Annual Fund Executive Committee, the Young Alumnae Council and then the Alumnae Board of Directors – Vice President for two years and President for a year. She served nine years on the Board of Trustees. And in 2013, Liz was hired by the College to re-engage with alums.

Originally attracted to PMC by its size, the personal relationships students had with their professors, and its beautiful campus, Liz hears many of the same thoughts echoed by current students and young alums. *"Although this is a different generation," she says, "it holds deep appreciation for many of the same qualities that first appealed to me and many generations of Pine Manor College students."*



“
I FELT I COULD
MAKE A DIFFERENCE.”

A Communications major and a Psychology minor, Liz believes the leadership and writing skills she acquired at Pine Manor College were the foundation for her successful career in fundraising and journalism. All in all, since '92, there has hardly been a consecutive 30 days when Liz has not been on campus – either as a volunteer, a trustee, a Child Study Center parent, or an employee. From pulling 'all-nighters' for the *Pine Manor Post* as a student, to her work with the College's many alums across the US in her current position, Liz is uniquely positioned to help alums stay in touch.

Lisa Rodrigues '06

Coming home as Pine Manor College's Associate Dean of Student Affairs and Adjunct Faculty, First Year Seminar (FYS) Program

As Associate Dean of Student Affairs at PMC for the past four years, Lisa Rodrigues knows what it takes to build rapport with students. *"It's about understanding. Caring about students and their families. Wanting to know what's really going on," she says. "Sometimes, students feel conflicted when they're in school. We help them to feel connected when they're here - bonding and building trust. It's not just about one experience or one year, it's about supporting them all the way through."*



Teaching the FYS course *Living in a Multicultural World* creates an opportunity for our students to understand their identity and the identities of others; while also working on important social justice issues. At PMC, we create a platform for people to dig deep and feel their personal identity. Through the Student Success Initiative, our collaborative approach reaches out to first-generation students who are transitioning from high school to college, making sure they feel at home right from the start. New initiatives include a designated Student Success coach, academic advisor, and Learning Resource Center tutor for all students during their time at PMC.

"Originally, I thought I wanted to go to a large institution, but I had a good friend who attended Pine Manor College. When I went to see the campus, I got good vibes at first sight. I'm a firm believer that things happen for a reason. PMC is an opportunity for students from all walks of life."



“
MY STUDENTS
MAKE ME PROUD
EVERY SINGLE DAY.”



COMMENCEMENT 2019

At Pine Manor College we celebrate our students' successes year-round, but at Commencement the entire community comes together to congratulate and recognize years of hard-work, resiliency, and passion. On Sunday, May 19th, 2019 we did so for the 108th time, celebrating the class of 2019.

William Stargard, Ph.D., College Marshal, opened the ceremony and invited President **Thomas M. O'Reilly, M.B.A.**, to give welcoming remarks. After thanking Pine Manor College's community members, Board of Trustees, faculty and staff, and friends and families of the graduating class, the President acknowledged the honorary degree recipients: **Melissa James**, founder and Chief Executive Officer of *The Tech Connection*, the largest minority-owned and woman-run recruitment firm in the Northeast, and **William Gross**, the first African American Commissioner of the Boston Police Department. Noting Melissa James as one who focused on creating solutions and building a better community, the President said, "It is exactly what Pine Manor College prepares students to do." President O'Reilly then acknowledged William Gross as a person who exemplifies the culture of Pine Manor College, as someone who takes charge, saying, "At Pine Manor College our culture is to be leaders in the community building process. As Commissioner Gross said, 'if you want change, you have to be the change.'"

Senior Class Speaker, Karoline D'Brito reflected on her college career, "Now that I am about to leave, I can look back and take in all that I learned over the past four years. I couldn't have done it without the support that Pine Manor College promptly offered me from day one. I have learned so much from my professors, inside and outside the classroom, and I've met people that changed the way I see the world and helped broaden my vision."

The President's Cup is awarded to a graduating senior who has furthered our understanding of inclusive leadership and social responsibility through one's personal and community accomplishments. President O'Reilly presented the 2019 President's Cup to **Hakeem Duncan**.

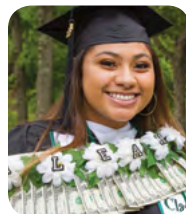
Hakeem Duncan receiving the 2019 President's Cup



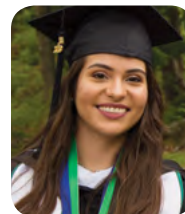
The Exemplary Achievement Award was established in memory of **Jane French McCall Dill**, a member of the Class of 1939 and a former Trustee of the College. It is awarded to a student who combines outstanding values and leadership with excellence in academic achievement. The 2019 Exemplary Achievement Award was presented by Dean of the College, Diane Mello-Goldner Ph.D., to **Aleah Lauti**.



*The Pine Manor College Award was given to **Nadia Obiesie***



*The Exemplary Achievement Award was given to **Aleah Lauti***



*Senior Class Speaker **Karoline D'Brito***

The Pine Manor College Award is given to a graduating senior who has, in the opinion of the faculty and staff, made outstanding contributions to the College and to one's peers. The 2019 Pine Manor College Award was presented by Dean of Student Affairs, Staci Weber, Ph.D., to **Nadia Obiesie**.

To read more: www.pmc.edu/commencement-2019



BOSTON POLICE COMMISSIONER WILLIAM GROSS

Beyond his outstanding professional achievements, Commissioner Gross is known for his ability to foster relationships and to see the best in people. To that end, Commissioner

Gross's actions and values align with those of the caring community of Pine Manor College.

The first African American Boston Police Commissioner, Commissioner Gross has been serving the people of Boston for 36 years, beginning in 1983 when he graduated from the Boston Police Academy. He spent many years as a patrol officer, and although he was rapidly promoted, Gross has kept close connections with members of the community he serves. Noting his relentless commitment to community work – through various initiatives like the Youth Violence Strike Force and the Drug Control Unit – the College's Board of Trustees acknowledges the impact that Commissioner Gross has had on the neighborhoods of many of our Pine Manor College students, over 30% percent of whom are graduates of the Boston Public Schools.

Commissioner Gross is affiliated with

groups that expand his advocacy to other parts of Massachusetts, such as the Massachusetts Major Cities Chiefs Association, the Advisory Board for the Boston Center for Youth and Families, the George Lewis Ruffin Society, and the Special Olympics of Massachusetts. In announcing the selection, President Thomas M. O'Reilly said, "As Commissioner Gross often says, 'Be the change you want to see.' It gives me great pleasure to recognize Commissioner Gross, who is that very change we want to see, with an Honorary Degree from Pine Manor College. He is a person who embodies the College's mission by his commitment to creating better communities that cherish equity and social justice. He is an inspiration to all of us."

To read Commissioner William Gross' citation, visit:

www.pmc.edu/William-Gross-citation

HONORARY DEGREE RECIPIENTS



ENTREPRENEUR MELISSA JAMES

Born and raised in Boston, Massachusetts, James is the founder and Chief Executive Officer of The Tech Connection, the largest minority-owned and woman-run recruitment firm in the Northeast. The company's mission is to help companies make meaningful connections that empower

and engage diverse talent by promoting inclusive hiring best practices. She is the daughter of immigrants, and like many of our students, was a first-generation college student, and graduated, with honors, from the University of Massachusetts at Amherst. An entrepreneur is generally described as a person who is a risk taker, a problem solver, someone who recognizes an opportunity and fulfills a need. Recognizing the lack of diversity in the hiring of technical talent by high technology companies, Melissa founded The Tech Connection to recruit and place technical talent from the minority community. She differentiated The Tech Connection by assisting candidates with skill assessment, feedback on performance, and by providing an online portal for career development.

To ensure that there would be network opportunities, she applied her entrepreneurial skills and also founded the Black Tech Boston Meetup.

She is relentless in her commitment to community and diversity in the technology industry today through STEM education. During an interview in 2015, shortly after she founded The Tech Connection, she said, "We want to create a solution that is going to have a lasting impact in our community." This is reflected in her company's mission and her passion for its success and recognized by the national and local awards she has received, including the U.S. Presidential Service Award, the UMass Distinguished Young Alumni Award, Bostonian's 50 on Fire Award, to name a few.

Through her own career path, and the commitment she demonstrates to advance equity and workplace equal opportunity, she is a reflection of the College's mission.

To read Melissa James' citation, visit:

www.pmc.edu/Melissa-James-citation



FIRST FORWARD DESIGNATION

Pine Manor College was recognized for its intentional, institution-wide efforts supporting a unique and growing segment of college students, first-generation students. The Center for First-Generation Student Success, an initiative of the National Association of Student Personnel Administrators (NASPA), Student Affairs Administrators in Higher Education and The Suder Foundation, recently announced their inaugural cohort of First Forward Institutions, naming Pine Manor College among the first institutions to receive this recognition.

The First Forward designation recognizes institutions of higher education that have demonstrated a commitment to improving experiences and advancing outcomes of first-generation college students. Selected institutions receive professional development, community-building experiences, and a first look at the Center's research and resources.

Pine Manor College defines first-generation college students as those students whose parents or guardians have not earned a baccalaureate degree. With over 85% of Pine Manor College's students identifying as first-generation college students, supporting them is central to every facet



of the College's operations, structure, and programming. The College's commitment to addressing the needs of first-generation college students is reflected in the College's mission and is echoed in all of the College's activities and departments from Admissions to Academic offerings, and from Student Life programming to support services.

Some of the programs unique to Pine Manor College that make the College more inclusive include:

- The College collaborates closely with college access and support programs, and has made financial aid awards letters clear and transparent.
- The College implemented changes to the application process and does not require standardized testing, including SAT and ACT.
- Financial aid counseling is available in both English and Spanish.
- Student Affairs and Academic Affairs partnered to launch the Initiative for Student Success that assigns all matriculated students, from their first year on campus through graduation, a Student Success Coach and an Academic Advisor.
- Academic Affairs offers free, unlimited

professional-tutoring; small classes; and hosts workshops and pop-up programming on writing, grammar, study skills, and living skills to meet students where they are in their college learning.

- Student Affairs offers free, year-round counseling (we do not triage our students to off-campus therapists), has housing options year-round for students, and has developed community standards based on restorative practices.
- The College has focused professional development and training efforts, community standards, and student support on racial and social equity, trauma-informed practices, and restorative justice.

“The Center is so pleased to welcome Pine Manor College into our inaugural cohort of First Forward institutions. Through the application process, it was evident that Pine Manor College is not only taking steps to serve first-generation students but has made a long-term commitment and employ strategies for significant scaling and important advances in the future,” said Dr. Sarah E. Whitley, Senior Director of the Center for First-Generation Student Success.

Staci Weber, Ph.D., Dean of Student Affairs, a leading advocate for first-generation programming and support enthusiastically accepted the recognition from First Forward, “With over 84% first-generation college students on campus, we celebrate our students regularly. It is both wonderful and humbling for our small college to be acknowledged for the difference we are making in the lives of our students.”

As a First Forward Institution, select faculty and staff will be afforded multiple opportunities to engage with peer and aspirational institutions who are also creating environments that improve the experiences and outcomes of first-generation students. Staci Weber and Lisa Rodrigues '96, Associate Dean of Student Affairs, attended the First

Forward Workshop and First-Generation Conference in Orlando in June and continue to participate in monthly phone calls, virtual professional development, goal setting, blog development, annual reporting, and more. After two successful years in the program, institutions are eligible to apply for the Advisory Leadership designation.

“First Forward is an exciting opportunity for Pine Manor College to join an elite community of professionals prepared to share evidence-based practices and resources, troubleshoot challenges, generate knowledge, and continue to advance the success of first-generation students across the country. We are excited to see a groundswell of activity from the First Forward cohort and know Pine Manor College will be a significant contributor,” offered Dr. Kevin Kruger, president of NASPA.

NASPA—Student Affairs Administrators in Higher Education is the leading association for the advancement, health, and sustainability of the student affairs profession. Its work provides high-quality professional development, advocacy, and research for 15,000 members in all 50 states, 25 countries, and 8 U.S. territories. Visit naspa.org for more information.

The Center for First-generation Student Success is the premier source of evidence-based practices, professional development, and knowledge creation for the higher education community to advance the success of first-generation students. Through four strategic priority areas, the Center drives higher education innovation and advocacy for first-generation student success.

For more information about the Pine Manor College, please visit our website: www.pmc.edu/first-forward



THE PINE MANOR COLLEGE BUSINESS AND MANAGEMENT DEPARTMENT IN COLLABORATION WITH ENTREPRENEUR IN RESIDENCE JEFFREY ROSS, PRESENTS THE FALL 2019 ENTREPRENEURSHIP SPEAKER SERIES – FROM IDEA TO BUSINESS!

The speaker series offers an intimate presentation by each guest allowing interaction and Q&A for PMC students with distinguished speakers in their chosen field. The presentations will highlight experiences, lessons learned, and unique issues and challenges faced by entrepreneurs when taking an idea for a new product or service and starting a new business.

AZSHA RAY '20

Business and Management Major

Azsha Ray brought up an idea for a social entrepreneurship venture to develop art therapy programs for children. Art therapy is a therapeutic technique rooted in the idea that creative expression can nurture healing and well-being. Through her internship with SSC Venture Partners, Azsha has been able to meet with for-profit and social entrepreneurs that will provide her a network to approach when she decides to launch her venture.

Duncan Walker, the Managing Director of SSC Venture Partners, a venture fund, accelerator, and mentorship network supporting startups founded by BC alumni and students, met Azsha at a PMC's Pizza and Entrepreneurship event and during an Entrepreneurship class. Duncan recognized Azsha's potential and asked Azsha to be an intern for the summer. Azsha gained considerable experience working with Duncan and got a close view of the start-up and tech scene in Boston.



“IN THE ENTREPRENEURSHIP CLASS, AZSHA EXPRESSED HER IDEAS WELL AND COLLABORATED EASILY WITH THE OTHER STUDENTS. SHE AND HER CLASSMATES WERE INSTRUMENTAL IN THE FOUNDING AND SUCCESSFUL DEVELOPMENT OF PMC'S POP-UP SHOP.” - Joseph P. Fagnoli, CPA, Assistant Professor of Business & Management

LET'S GET TO BUSINESS!

MARK HARDIE | NOVEMBER 17 AND 19, 2019 | 12:30 - 1:30 PM | HALDAN HALL

Mark Hardie is a serial entrepreneur and start-up veteran with a passion for innovation and the Director of Framingham State University's Innovation Center. The son of two teachers, he has taught and lectured on technology issues at Harvard, MIT, University of Virginia, and University of Hartford. He is a career-long mentor at the MIT Sloan School of Management and currently a Career Coach at Harvard Business School, working with start-up teams, founders and would-be entrepreneurs.

Other speakers in the series included local entrepreneurs: **Steve Grossman**, CEO of the Initiative for a Competitive Inner City (ICIC), **Melissa James**, award-winning entrepreneur, speaker, author, and founder of The Tech Connection, **Donna Chaplin**, Salon owner at Epiphany hair care studio, **LeRoy Watkins**, CEO & Co-Owner of Viking Sports, and **Ben Krysiak**, President and Co-Founder of OnSight Vision.

Jeffrey Ross, Pine Manor College Entrepreneur in Residence, is the Managing Partner of Glenoe Associates LLC and an advisor to family and privately held businesses. Jeffrey has been a CEO/owner of several companies including Thayer Pharmacies, Pet Supply Depot, Hearthstone Assisted Living, and Quincy Medical Supply.

Read more at: www.pmc.edu/lets-get-to-business-fall-2019-speakers

AT HOME

“

At Pine Manor College I feel like I have a support system and everyone treats me like family. The Professors do more than just teach from textbooks - they teach real-life lessons for you to carry on after college.”

Robert (Spesh) Harrison '19
Business and Management Major

“

The people who make up the Pine Manor College community took me under their wings and helped me adjust to something new. I plan to continue my studies and become a Registered Nurse and then a Certified Midwife.”

Elisabeth Smith '23
Biology Major

“

As a transfer student to Pine Manor College I can say, I have never felt as comfortable as I feel at Pine Manor College. The students and staff are incredibly welcoming, making sure I have all I need and constantly checking on how I am doing.”

Breanna Garcia '22
Sociology and Political Science Major

“

As an international student, I came to Pine Manor College to refine my English language skills, but found that I am also developing cross-cultural skills. I now have close relationships with many different people like Asli from Somalia, Nurik from Kazakhstan, Ashley from Alabama, and Feven from Florida.”

Ganquan (Sam) Zhao '22
English Major

“

Pine Manor College is home to me. Coming back every fall I get to see the same people who show me love and support since the day I started. PMC supports me on my path to achieving my goals.”

Dayana Jean Jules '20
Psychology Major



MCC GRANT A HOME RENOVATION PROJECT

PINE MANOR COLLEGE WAS AWARDED A \$70,000 MATCHING GRANT FROM THE MASSACHUSETTS CULTURAL COUNCIL (MCC)



ArtsFest's student performances at Ellsworth

Pine Manor College was awarded a capital grant from the Massachusetts Cultural Facilities Fund (CFF), an MCC state program that provides capital and planning grants to nonprofits, colleges, and municipalities that own or operate facilities primarily focused on the arts, humanities, and sciences.

The MassDevelopment Board of Directors has approved a \$70,000 Capital grant for Pine Manor College, as one of the largest individual gifts awarded. The grant is designed as a matching grant and the College must raise the funds needed to match this grant. Support from our Alums and friends will be critical to meet this challenge.



"Outspoken 7 Women Photographers" Artists' talk at the Hess Gallery

This matching grant will raise \$140,000 in total funds and will sponsor the College's Ellsworth Theatre Restoration Project and the renovation of the College's art gallery, The Hess Gallery. The College has launched a fundraising campaign to raise the initial required funds.

"We are very excited to receive the support of the Massachusetts Cultural Council, acknowledging the importance of Pine Manor College's facilities in promoting the arts," said Janine Dailey, Vice President of Advancement & Alumni Relations, "Our Theatre and the Hess Gallery serve not only our students but neighbors, partners, and the greater community, who enjoy performances and exhibits in those spaces."



Welcoming new students at Ellsworth Theatre

The Ellsworth Theatre Restoration Project is planned for the summer of 2020, in support of the College's Performing Arts program. The restoration project includes replacing all 500 seats in the theatre, purchasing new stage curtains and a projector screen. The Hess Gallery renovation will include renewing the gallery display walls and replacing the floors.

WE NEED YOUR HELP!

Please support the arts at Pine Manor College.

Contact **Janine Dailey**, Vice President of Advancement & Alumni Relations at jdailey@pmc.edu to learn more.

CONIFERS

AN EVERGREEN PUBLICATION

By **Hannah Baker-Sirotky**, Assistant Professor of English: Writing and Literature and College Composition Program Coordinator



Sunset photo by Azsha Ray '20

This past year for our Women in Detective Fiction class, Professor Diane Mello-Goldner (also Dean of the College) and I did some digging into old yearbooks. In doing so, I was reminded of the many clubs, organizations, and groups that have worked to showcase the achievements of our students over the years. I was particularly struck by the legacy of Conifers, the Pine Manor College literary magazine. As our College has changed, so too have the stories of our students, but the strength and resiliency of the Gator spirit endures. As such, it felt like a major priority for Assistant Professor of English, Shelley Linso and me to relaunch Conifers during the 2018-2019 academic year, thanks to a suggestion by Dean Mello-Goldner during the summer of 2018.

The main goal Professor Linso and I had in doing this was to highlight the talent that we are seeing in our Creative Writing, Poetry, and Fiction classes. To their great credit, our students' work resonates with authenticity, risk, and vulnerability. For example, in one student's work of short fiction, "The Last Eclipse," Ashley Smith '20 makes innovative use of personification and imagery, while authors Vanessa Aarons, Paul Kittredge, and Ty Smith explore memory and family through their short works of creative non-fiction.

We also made space for visual artistic expression. The cover art is a photograph by Azsha Ray '20, taken from an airplane window. We thought that this was a particularly stunning representation of the vision we had for breathing new life into Conifers. It is a new beginning for the magazine, but also a coming home. Another exciting feature of moving the publication on-line is the ability to incorporate audio. Most of the published poems are accompanied by recordings of students reading their work. "Apple of My Lies," by Garrett Gagnon '20, is both a short story and an audio recording he completed in his podcasting course with Associate Professor of Communication, Eileen McLaughlin.

We are extremely proud of our students and their ability to leverage the power of words and images to say meaningful things. We look forward to continuing this work with our students and showcasing their accomplishments within this space. We are also always looking to supplement our publication with alums submissions. If you have a piece of written or visual art that you would like to share, new or old, please do not hesitate to be in touch at conifers@pmc.edu. True to its namesake, Conifers is continuously renewing. It is a space for all Gators to join voices and be heard. Please visit: www.pmc.edu/conifers



Porsha Olayiwola Boston's Poet Laureate



The Anne P.
Anne P.
Nicholson '40
Distinguished
Lecture Series
sponsored

a poetry workshop lead by Boston's Poet Laureate, **Porsha Olayiwola**.

Porsha Olayiwola came to Pine Manor College and led community members through a poetry workshop titled: **Nostalgia, Sankofa, & Reclamation**. Sankofa is a word in the Twi language of Ghana that translates as "Go back and get it." In this workshop students explored identity through narrative poetry. This intimate workshop is designed to allow examination of personal and ancestral history. To learn more about Porsha and her work, visit: www.porshaolayiwola.com



HOME GROWN

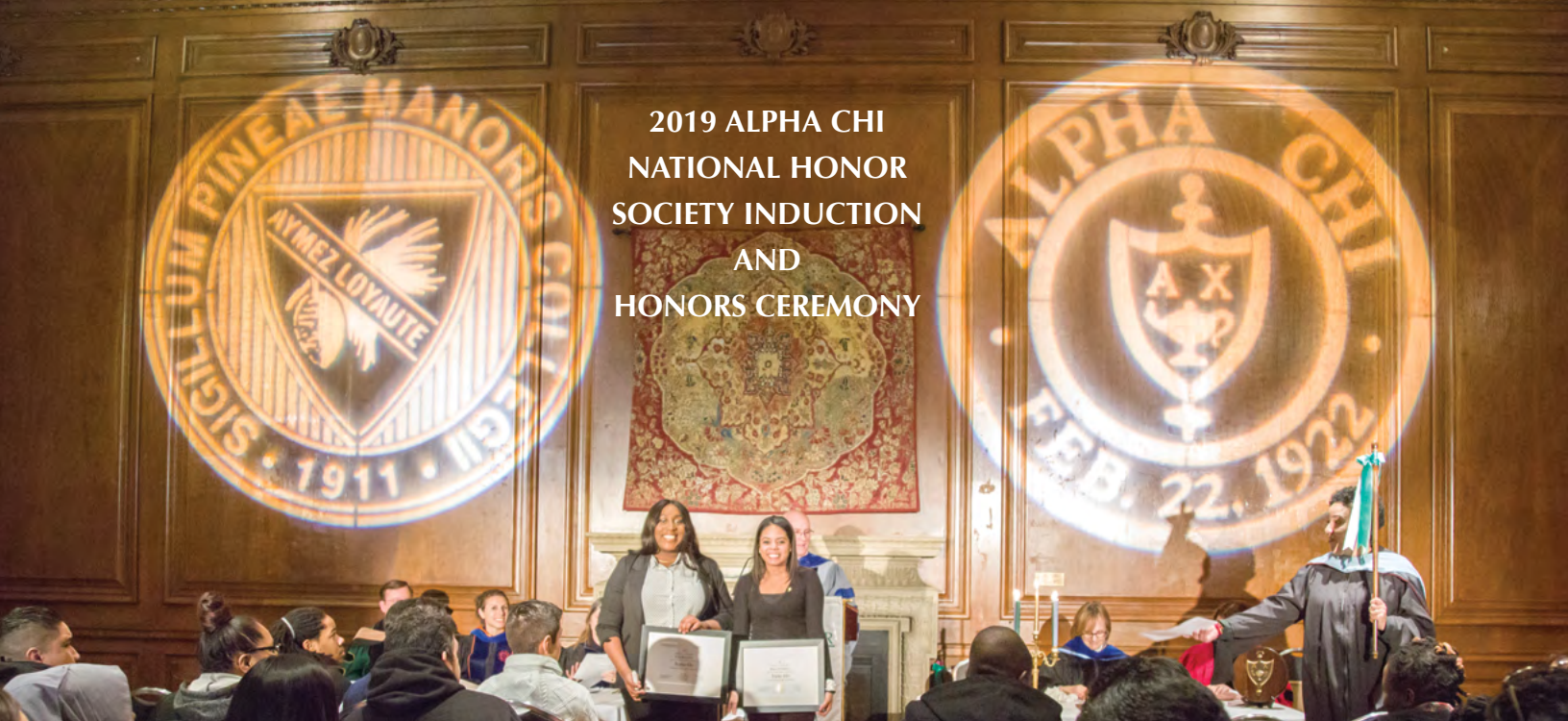


The Pine Manor College Community Garden was launched this spring through a partnership with the **Harvard Pilgrim Healthcare Foundation**, our on-campus **Aladdin Food Service**, and the College's Biology Program. Raised garden beds were installed during the Harvard Pilgrim Health Care Foundation's Employee Day of Service (See pictures of the Harvard Pilgrim Health Care team in red t-shirts below), and over the summer, an assortment of vegetables were planted and cared for by Dr. Susan Bear, Professor of Biology,

and Anthony Dedek of Aladdin.

This garden is part of the College's new Healthy Living Initiative that brings a "farm to table" focus to our dining hall. The Pine Manor College Garden Club will launch this fall and be open to anyone interested in gardening. The Club will plan and maintain an organic garden that will provide vegetables and herbs for student meals. By using the greenhouse, club members will be able to work during the winter and be ready for spring gardening.





2019 ALPHA CHI NATIONAL HONOR SOCIETY INDUCTION AND HONORS CEREMONY

PMC HIGH ACHIEVERS RECOGNIZED AT HOME

Acknowledgment at home empowers our students to think big, spread their wings, and take on the world. It is for that reason that we make time to celebrate and recognize our hard-working high achievers. From exceptional academic scholarship to outstanding athletic achievement and dedicated community work, we recognize those who are making our community the home that it is.

ALPHA CHI NATIONAL HONOR SOCIETY INDUCTION CEREMONY



The annual Alpha Chi National Honor Society Induction recognized **Rosy Basil-Kalu '20**, **Latonia Cox '19**, **Pamela Fernandez '21**, **Cyril Fonrose '19**, **Danielle Sturgeon '20**.

This year's Alpha Chi Honorary Inductee was **Professor Rebecca Mitchell, Ed.D.**, Associate Professor of Mathematics. *"Our scholarship only really matters if it is shared and used for good,"* said Professor Mitchell in her acceptance speech.

Visit our website for more details and photo albums from these events.



COMMUNITY HIGHLIGHTS

DENIMDAY



Members of the PMC community joined together on #DenimDay to mark Sexual Assault Awareness Month. A world-wide movement, Denim Day began in 1992 as a protest in Italy, after a 45-year-old man was found not guilty of raping an 18-year-old girl because her “jeans were too tight to have been removed without her help.”

We at PMC know and believe that no matter what you’re wearing, no matter how tight or loose, modest or revealing: clothing never equals consent. Community members gathered to make t-shirts and then continued on a walk around campus in solidarity for all victims and survivors of sexual assault.

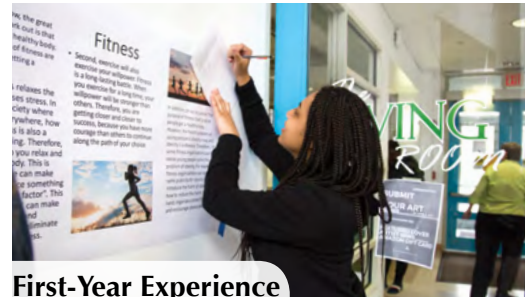
PROFESSOR RIVERA'S GLOBALIZATION CLASS HOSTED A CAMPUS-WIDE EVENT

The class presented research work on various global issues including, gender and pay equity, Islamophobia, international sports, and international human rights. The event included student performances by **Harris Hung '21** (of Taiwan) who played the piano and **Gabriel “DaVinci” Williams '20** (of Washington, DC) who performed his spoken-word poetry. Various members of the class also prepared homemade dishes showcasing Haitian, Jamaican, and Cape-Verdean cuisines among others.



A NEW COMMUNITY MURAL AT THE ASHBY STUDENT CENTER

The large mural created by PMC Visual Arts professor and acclaimed artist, **Percy Fortini-Wright**, was conceived with valuable input from Pine Manor College students and other community members.



First-Year Experience

Students involved in the course “First-Year Experience” this Spring, presented their “Passion Project” posters as part of Community Day.



The First-Year Experience instructors hosted a celebratory scavenger hunt called “The Amazing Race” to end the semester. The race led first-year students through the campus while completing different activities and answering trivia questions. What a great way to celebrate the students completing their first year at Pine Manor College!





RETURNING HOME TIPS FROM PMC ALUMS

Fourteen Pine Manor College alumni from the Psychology, Sociology and Political Science, and Community Health major programs spoke to a group of current students about their post-graduation experiences. While they had different majors at PMC, they all went on to careers helping others in either a healthcare or community setting. The alumni spoke about how their experiences at PMC prepared them for graduate school, and more broadly, for their careers.

An open discussion followed that focused on job search tips and the various challenges of obtaining employment after graduation.

The panel included:

Zoe Asibey '14, Lichelle Bradshaw '07, Sparkle Calhoun '13, Sera Godfrey-Kaplan '02, Jessica Gonzalez '09, Maria Ines (Peniche) Folta '15, Amy Hatzigiannis '96, Samantha Jones '15, Helena Makor '10, Betsy Maysonet '17, Jose Paulino '15, Carmen Pena '14, Chrissy Ward '11, and Sharon Ward '11.

To read more, visit:

www.pmc.edu/psychology-alumni-dinner-spring-2019



Robert Calhoun with Diane Mello-Goldner and her dog Henry, at the annual Halloween costume parade of the Child Study Center.



Remembered

ROBERT CALHOUN MEMORIAL SCHOLARSHIP



The Robert Calhoun Memorial Scholarship Award (left to right): Val Bastien, Darien Calhoun, Feven Bedard-Khalid '20, Oby Ojimba '21, and Shelley Dropkin.

The Robert Calhoun Memorial Scholarship Award is a new award that was created this year to honor a beloved member of our community who passed away suddenly in January of 2019.

Robert was a wonderful and dedicated staff member and worked in the finance office as the senior accountant. He brought his extensive expertise in helping the team in numerous ways. Robert also participated in the PMC Men's Group and became a mentor to many students.

Shelley Dropkin, Director of Human Resources and Val Bastien, Academic Affairs Office Manager, introduced the new award and its inaugural recipients.

"Robert's passing rocked our community and caused us to pause and realize how important and valuable each day truly is. Robert also showed us that it's not just what you do, but how you do it, and how you make others feel, that really matters."

Several staff members, including Val Bastien, Ross Merlin, Jim Piermarini, and Shelley Dropkin, expressed a desire to do something to honor Robert's memory and the example he set. The team received numerous donations from staff, faculty and students in support of establishing a scholarship in Robert's honor. The Robert B. Calhoun Memorial Scholarship will be given to students who best exemplify Robert's genuine and caring spirit, calm and engaging demeanor, authenticity, and ability to challenge us to be better and make a difference in the lives of others.

The College was honored to have Robert Calhoun's family attend the award ceremony, and his son, Darien Calhoun, helped present the awards.

For the inaugural year of this award, the Robert B. Calhoun Memorial Scholarship was presented to two students: **Feven Bedard-Khalid '20** and **Oby Ojimba '21**.



The Athletics Department also chose to honor Robert and the 2019 MVP award was dedicated in his loving memory. The award was presented to **DeAngelo Clarke '21**, during the a Student vs. Staff basketball game, in recognition of his strong leadership, both on and off the court, and in honor of Robert's spirit. [Photos by PMC student, Oby Ojimba '21.]

WRITING HOME

NOTES OF GRATITUDE FROM OUR ALUMNI

Norine Murphy McCahey '47,

P'71, P'72, P'74

My years at Pine Manor College were just perfect. My older sister and younger sister also had fabulous memories as students at PMC. While there, I made wonderful friends and had great teachers. My major was Home Economics. People always laughed at the subject, not realizing we had to take the basic courses of English, History, etc. The best time was in the second year when we lived in the cottage only for the students in this major. In those six weeks we changed each week - one week housekeeper, then cook, waitress, etc.



We all learned a lot.

I was so happy at PMC that three of my daughters attended. Pine Manor College became a tradition in the family. Two of my sister-in-laws and two nieces also attended. I can not say enough about the teachers. Each one that I had treated me as if I was the only one in the class, and we all had that feeling. They made each course a learning enjoyable experience. Wonderful writing this, brought grand memories back again.

Margo Cushing '61

This is what I remember best about PMC:

We had a very congenial class, I was in Advanced French so Senior Year I moved in the French House.

Senior Spring Vacation I went on a trip to Italy, and that's where I fell in love with the country.

I followed the next year with studying independently in Florence, and learned Italian and many new things.



As a travel agent, I am known as an Italy expert, and recognized as such by Travel and Leisure from 2003 to 2013.

I joined an advance Italian Language class just to keep up and have read good books (Primo Levi, Lampedusa and Tabucchi.)

I want to add what good professors there were and some of them like Dr. Henry and Dr. Gegerias, and I even traveled with their alumni groups.

Mary-Lou Youmans Moulton '63

I arrived on the Wellesley campus in the Fall of 1961 after graduating from New Canaan High School in New Canaan, CT. The day that we drove to Massachusetts there was a full-blown hurricane hitting the area. It made driving quite difficult but we successfully arrived on campus. I was assigned to live in Wheeler House, which was also a dining center. That was nice! I did not have to wake up extra early to walk to breakfast. Our House Mother was Miss Gurney and she assigned me to the job of Fire Warden! I had to blow my whistle and awaken everyone in the house at 2 a.m.! I was not popular when I did that!

My roommate, Lassie Stout, was from St. Paul, Minnesota. She was a very friendly girl and an excellent athlete. We roomed together both years and she was on the Tennis Team and I was in the Modern Dance Group. The other girls in our house were very nice too. Several were from Texas! We had to teach one of the girls from New York City how to ride a bicycle! She had never learned that skill in busy Manhattan!

My favorite professors were Dr. Rodman Henry (Art History) and Dr. Mary Gegerias (French). I also studied Spanish at Pine Manor, but French was my favorite! I would have been delighted to go to Paris for the third year abroad at the Sorbonne, but it was a little bit beyond my budget! Looking back, I know now that I would have met my present husband



(who is a native Floridian) at the Sorbonne. He was attending the University of Florida and was studying French and living with a French family in Paris!

Dr. Henry's Art History classes were so enlightening! His slide shows familiarized us with many famous works of art and many statues. When I went to Italy many years later on my honeymoon, I remembered Dr. Henry's descriptions of the beautiful architecture and statues.

Pine Manor was only three hours from my home in Connecticut, so I was able to easily go home for vacations, etc. However, I regret going home and not going on a semester break ski trip in Massachusetts. I have learned how to ski, but only after taking many lessons in Beaver Creek, CO.

I was also in the Modern Dance Group at Pine Manor which was a wonderful experience. We performed on campus and also in some workshops in Boston. Our teacher (Martha Baird) had graduated from Bennington College and was a beautiful dancer!

I would never trade my years at Pine Manor for another college. I have been the Class Agent (after graduation) and also participated in several fund-raising events for the college here in Sarasota, FL. I also have returned to the "old" and "new" campus for many Class Reunions. THANK YOU, PINE MANOR, FOR ALL THE GOOD MEMORIES!

Alice (Abbi) Diman Pratt '63

Every thing to do with French at Pine Manor helped shape my future life and career. I had a huge respect for Dr. Gegerias. I lived in the French house (Lathrop), made life long friends, and prepared for my year in Paris. The Paris Reid Hall program with classes coordinated chronologically to show influences of history on art, sculpture, theatre, literature, and architecture made my year there rich and memorable. That plus the hours of practice of pronunciation helped me prepare to teach high school French. I taught for several



years and was named teacher of the year in two schools. I continued to teach at the adult level after my children were born until my retirement at 65. French still plays a huge place in my life with many French friends, a French goddaughter, and frequent trips back to visit.

Pine Manor was a wonderful learning and cultural experience. It shaped my life in many positive ways. Dean Romig, Dr. Agnew, and Dr. Henry were other memorable teachers and friends who influenced my life in lasting and positive ways.

Barbara Baldwin Dowd '69

I really gained confidence in my academic abilities during my two years at PMC. My best teacher was Mrs. Atkinson, who encouraged me to speak up and express carefully argued opinions. I wrote a paper for her comparative religion class comparing Mohammad's flight to Medina and Jesus' last trip to Jerusalem. (Was I really so naive to write on such a topic?)

I loved Dr. Rod Henry's classes in art history, and later traveled twice with him to Italy to see the great art in Naples, Assisi, Rome and Venice!

I also traveled to Aix en Provence, Nimes, Arles and Paris (2 trips) with Dr. Gegerias. What delightful and informative trips those were! But mostly I remember she talked me into playing the part of Lucidore in



a play by Moliere. I had to memorize 400 lines of French, and act the part of an 18th century young man! (I goofed and burst out laughing in the middle of the play).

The professor I knew the best was Dr. Beth Gardner, with whom I served on the Board of Trustees, years after my graduation. She had such a clear vision of what PMC had been and could be, and how to nurture students from all sorts of backgrounds. She promoted careers in the sciences long before other women's colleges, and she helped many graduates go into medical professions. She was truly tireless in her support of PMC.

I've seen the college struggle with its image, shrink and expand, and now succeed in ways I couldn't have imagined 50 years ago. I am proud of Pine Manor College's past, but more proud for its future.

Melissa D. Gordon '89

Pine Manor College is the greatest memories of my life! At the time, I studied Communication with Bob Owzareck and David Smith. Both teachers taught me the skills that I use today in radio and TV broadcasting. Mr. Smith felt I had a flair for interviewing, and he also thought I was funny. I'll never forget a production we did in the studio where I had to play a spoof as Mr. Rogers wife Mrs. Robinson... I had the class in stitches. My career transpired in all different aspects of entertainment from comedy to acting and dance as well as modeling. These were also some of my hobbies in college. I danced in a few productions as well as acted in a few films like Eddie Murphy "Boomerang" as



well as TV shows including "Blue Bloods" and "Gotham," also modeling as a print model for the diet company Trim Spa.

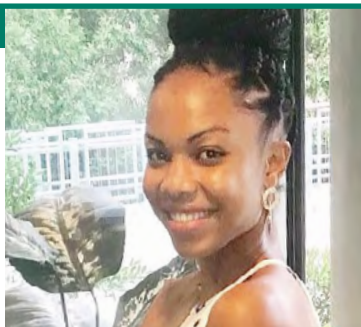
Currently I am a radio on-air personality for WFDU 89.1 FM HD2 and *On The Red Carpet* for OTRCTV covering the Oscars, Grammys, fashion shows, film music premieres and other entertainment venues! I am proud to have become the person I am! This was definitely a journey.

"No matter what obstacles come you're way nothing can stop destiny or fate!" I always knew I would be in entertainment and my journey started with PMC and helped with all aspects of my career today!

Cameal Bevas '14

I am a 2014 graduate of PMC with a B.A. in Early Childhood. I was a first-generation College graduate. PMC has made a positive difference and impact in my life in various ways. My time as an undergraduate was very educational and prepared me to continue my professional development.

I cannot amount the words of how grateful and blessed I am to have met, Dr. McElroy, of the Early Childhood Department. As an Early Education Major, to now my current role as an Executive Director for an Excelling Childcare program, I am humbly thankful to have gained the fundamental knowledge and experience to be successful in my role.



I was able to participate in prepracticum experiencing various populations and age groups. After graduating, it became clear that this experience is highly desirable in my field. The skills and knowledge were also very important in seeking employment through the Department of Early Education and Care, and Massachusetts Guidelines. Dr. McElroy is still a positive and influential role-model in my professional life.

The campus is welcoming and the professors attentive, meeting each individual student's needs.

I am so happy to see that the school continues to thrive, providing quality educational experiences with mission and purpose, and showing commitment to the values that have sustained students for over 100 years.

KEEP IN TOUCH

Provide us with your updated contact information and receive the latest Alumni News from Pine Manor College. Visit: www.pmc.edu/update-your-contact-info

We'd love to hear from you. If you wish to share with us milestones or celebrations, please send them to Liz Cary Blum at ecaryblum@pmc.edu

To submit your notes online, please visit: www.pmc.edu/alumni-update

50 YEARS OF GIVING

The story of Mary Jane Converse '46

Mary Jane Converse '46, a dedicated alumna of Pine Manor College, passed away on March 31st, 2019. She was 94 years old and spent most of her life in West Hartford, Connecticut. During her time at Pine Manor College, she served on Student Council for two terms, was a member of the Helen Temple Cooke Society, Red Cross Representative of House, and Co-Chairwoman of the Red Cross Production Corps. She fondly remembered Miss Russell as a wonderful teacher who sparked her interest in history.

Mary Jane remained an engaged learner and active alumna after graduation, attending many of Pine Manor College's international trips with former Director of Alumnae Relations, Carlyn Ellms and President Emerita Rosemary Ashby. Despite her shy nature, she found a welcoming camaraderie among her fellow alumni travelers, and shared stories of cruising with her family on the Connecticut shore and traveling to Australia and New Zealand and other vacations. At home Mary Jane was an active member of the First Church of Christ Congregational, UCC in Connecticut, where she volunteered at its care center for children with developmental disabilities.

In appreciation of her experiences at the college, Mary Jane gave annually to Pine Manor College for over fifty consecutive years! Her steady donations supported the PMC initiatives she most believed in; including Women of Promise: The Campaign for Pine Manor College and the PMC Centennial Fund.

In order to ensure her continued support of PMC, Mary Jane has generously included Pine Manor College in her estate planning. Her legacy gift of \$1,200,000 will ensure that she continues to have an impact on the mission of the College well into the future. We are so very grateful for her numerous years of unwavering support, and her decision to ensure its continuation for years to come.



Mary Jane gave annually
to Pine Manor College
for fifty consecutive
years!



From the 1946 yearbook:
Mary Jane Converse sitting in the middle row, first on the left.

A LEGACY OF PURPOSE

Planned gifts are ways to create a lasting legacy and can be an effective means of providing tax savings and financial benefits to you and your family. These substantial charitable gifts to Pine Manor College are available under a variety of options, including bequests and trusts.

To learn more about opportunities to create a lasting legacy at Pine Manor College through our Planned Giving program, Visit: www.pmc.edu/planned-giving please contact the Office of Advancement at development@pmc.edu or 617-731-7623.



Perry Administration Building
Pine Manor College

TIME TO COME HOME

WE INVITE YOU TO JOIN US AND
COME HOME TO PINE MANOR COLLEGE,
THE PLACE WHERE IT ALL BEGAN...
PLEASE SAVE THE DATE.

An all-college reunion for all classes

November 6-8, 2020

Chestnut Hill, Massachusetts

TENTATIVE EVENTS

**All-College cocktail party
with current and former faculty and staff**

Class Dinners

All-Reunion Dinner

**Special classes and workshops
taught by current and former faculty**

Wine Tasting

Museum tour with current faculty

We are looking for Class Captains to help encourage their classmates to attend and to help with fundraising and planning activities over the weekend. If you would like to volunteer or nominate someone, please contact Liz Cary Blum '92 at 617-731-7006 or ecaryblum@pmc.edu.

During the weekend we will unveil our Wall of Gratitude. For donations of \$1000 and above, your name will be inscribed on a Wall of Gratitude on campus. Groups are welcome to get together to include your class on the Wall of Gratitude. Please contact Janine Dailey at 617-731-7623 or jdailey@pmc.edu for more information.



Giving with Purpose

Susan (Sue) Gibson '95 is a take-action kind of alum. In 2017 when she heard that the Town of Brookline was considering taking part of Pine Manor College's campus through eminent domain to build a new elementary school she immediately created an online petition against the proposed plan. Within days there were several thousand signatures, and a small army of alums ready to fight for their college.

Sue, originally from Houston, Texas and now living in Palm Beach, Florida, is a loyal alum who stays connected to Pine Manor College by arranging mini reunions with her PMC friends, attending and hosting broader events for alums, and by consistently supporting the Pine Manor College Annual Fund. In her free time, she is a long-time member of the Junior League of Palm Beach, and is active with the local American Heart Association, the Contemporaries at the Society of the Four Arts, American Friends of British Art, and the Peggy Adams Animal Rescue League. And she's "mom" to several rescue kitties.



Anselberg Library and Communications Center
Pine Manor College

Every student benefits when you give!

Gifts to Pine Manor College have a transformational impact on the life of every student. Students are able to embrace and embark on academic and career paths that affect their lives and bring positive change to their families and their communities.

When you give to Pine Manor College, it translates into meaningful outcomes that are evident in the lives of each and every student.

Your gift matters!

Become a member of the **Educating with Purpose Giving Circle** today.

www.pmc.edu/giving

Cash, Debit and Credit Cards

A gift of cash, generally made by check, debit or credit card, is the most common way of supporting the College. Pine Manor College accepts gifts using American Express, Visa, and MasterCard online at:

www.pmc.edu/giving

Securities

Giving appreciated securities to Pine Manor College may have more tax advantages than giving cash. If you donate appreciated securities held longer than one year, you can deduct the full fair market value, regardless of what you originally paid for them, and you pay no capital gains tax on the donated securities. With these tax savings, the actual cost of your gift can be less than if you had made a cash gift.

IRAs: The “Tax-Free” Gift

Did you know you can use your IRA to make a charitable gift? If you are 70 1/2 years or older, you can gift up to \$100,000 of your Individual Retirement Account's Required Minimum Distribution directly to a charity and avoid income tax on the distribution. Consider supporting the Pine Manor College Annual Fund with a contribution from an IRA.

Planned Gifts

Planned gifts can be an effective means of providing tax savings and financial benefits to you and your family, while also providing a substantial charitable gift to Pine Manor College. A variety of options, including bequests and trusts, are available vehicles for planned gifts.

Matching Gifts

Many companies match charitable gifts made by employees, retirees, and directors. You can increase the impact of your contribution by applying to your company for a matching gift. Check with your human resources department for details about your company's matching gift program.

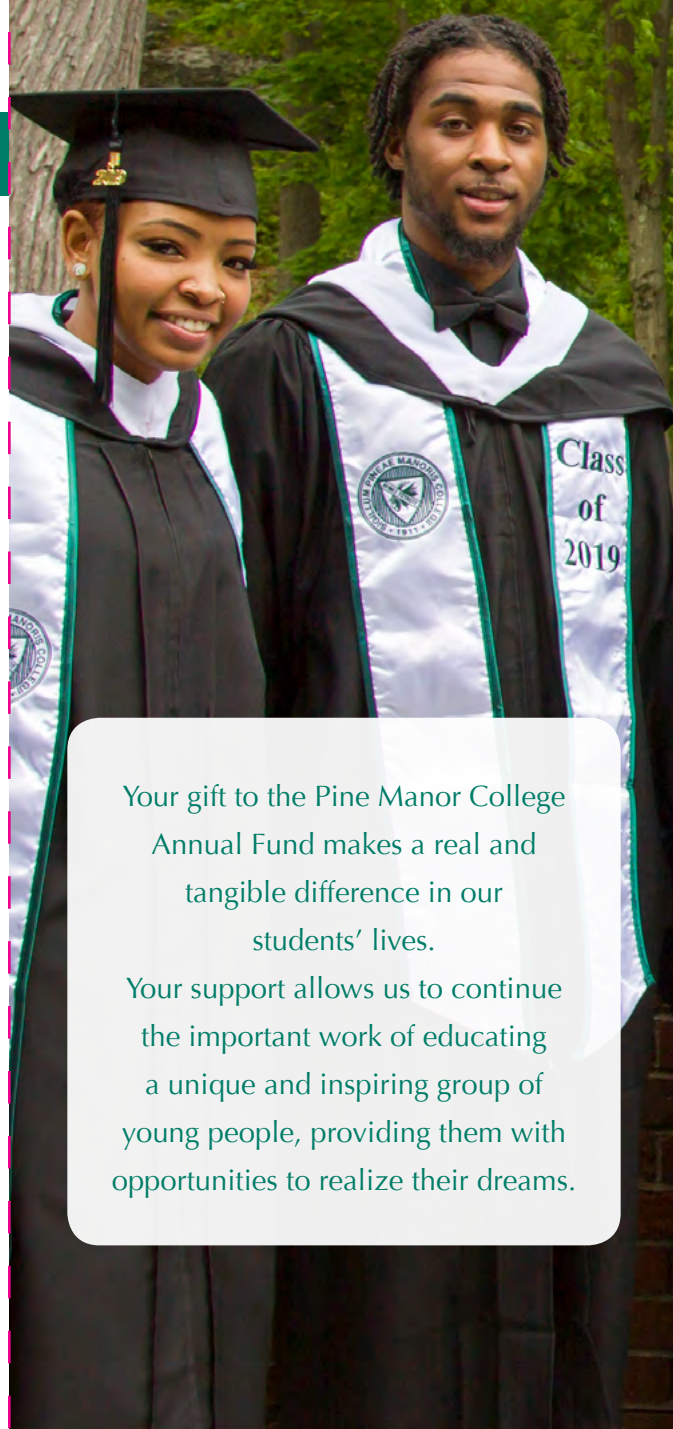
For donations of Securities, IRAs, and Planned Gifts we recommend consulting your financial planner to see what options are best for your particular circumstance.

Contact us at 617-731-7113

or email: development@pmc.edu.

We are grateful for your interest and support.

Support Today's Students and Tomorrow's Leaders



Your gift to the Pine Manor College Annual Fund makes a real and tangible difference in our students' lives.

Your support allows us to continue the important work of educating a unique and inspiring group of young people, providing them with opportunities to realize their dreams.



Pine Manor
College

400 Heath Street, Chestnut Hill, MA 02467

EDUCATING WITH PURPOSE

Come Home

Answer the call to support
our mission of Educating with Purpose.

www.pmc.edu/giving



100%

Student participation
in internships



100%

Service learning opportunities



95% Employment or
advanced study upon
graduation



85%

Students of color



84%

First generation college students



80%

Financial aid eligible students



50%

Multilingual students



3x

National average graduation
rate for students served

Please support our students.
Give today!



Like us on Facebook:

www.facebook.com/PineManorCollege1911

